

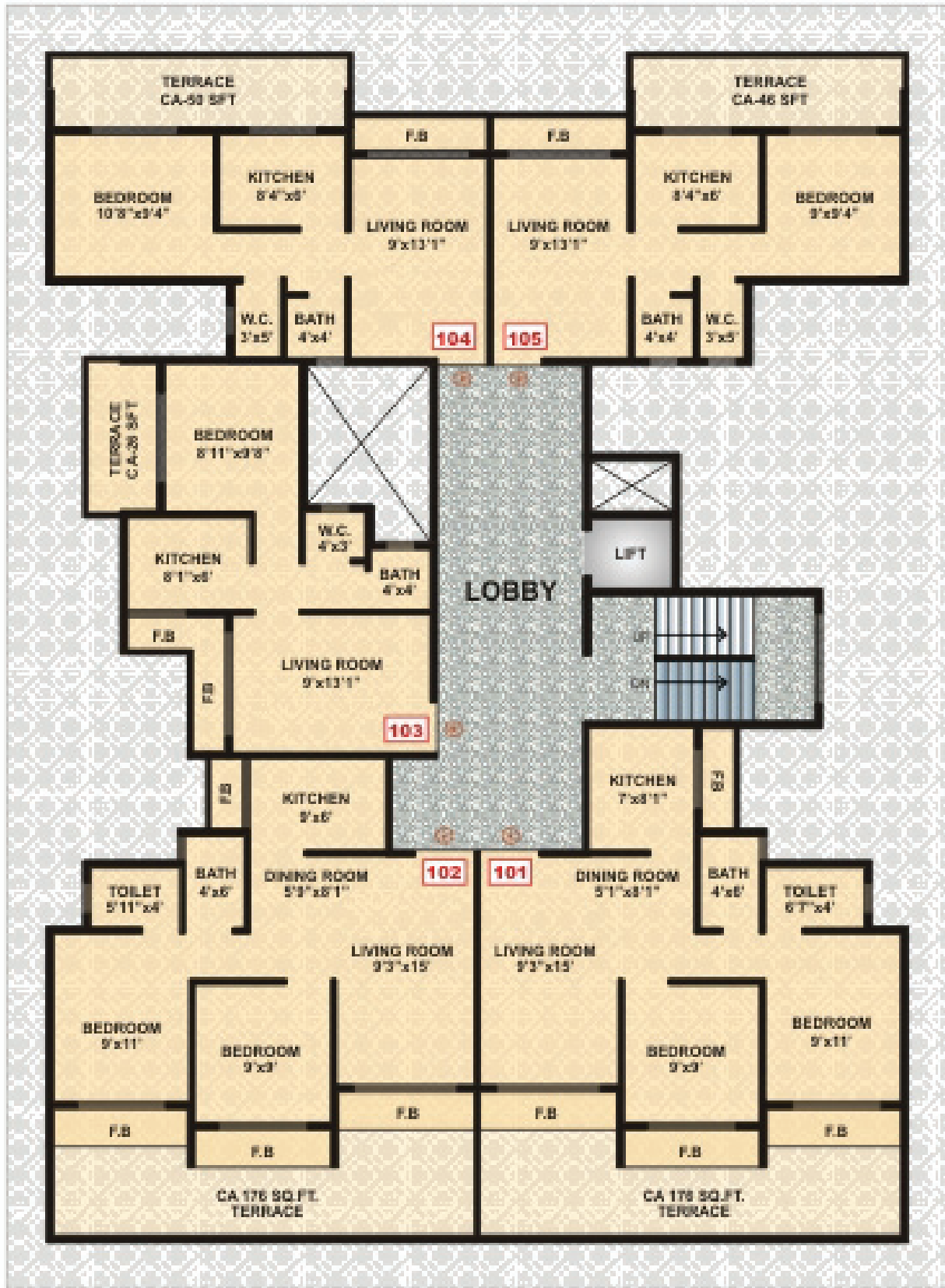
Jasmine

Apartments

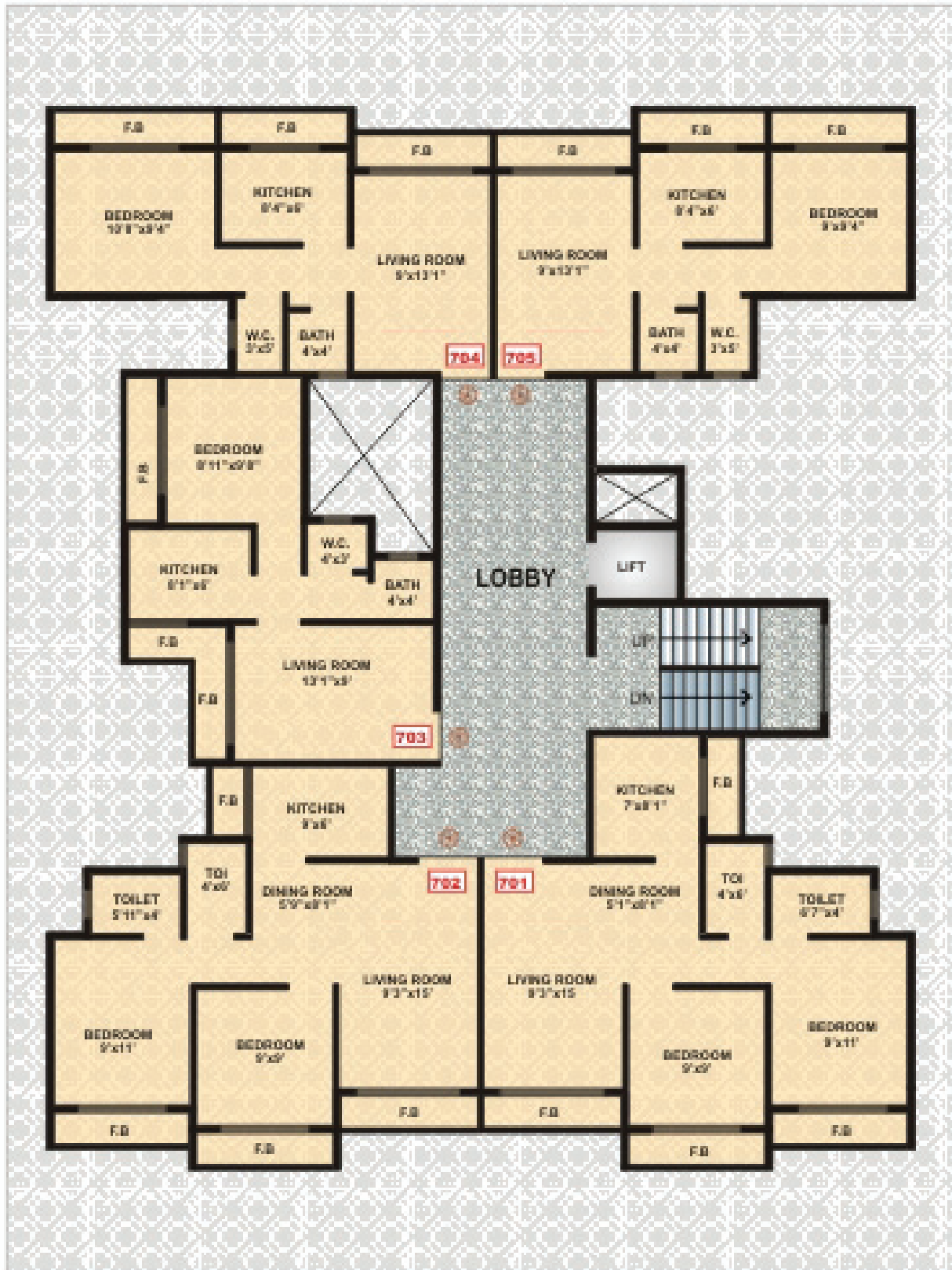
Apartments



Plot No. 102, Sector 10, Taloja.

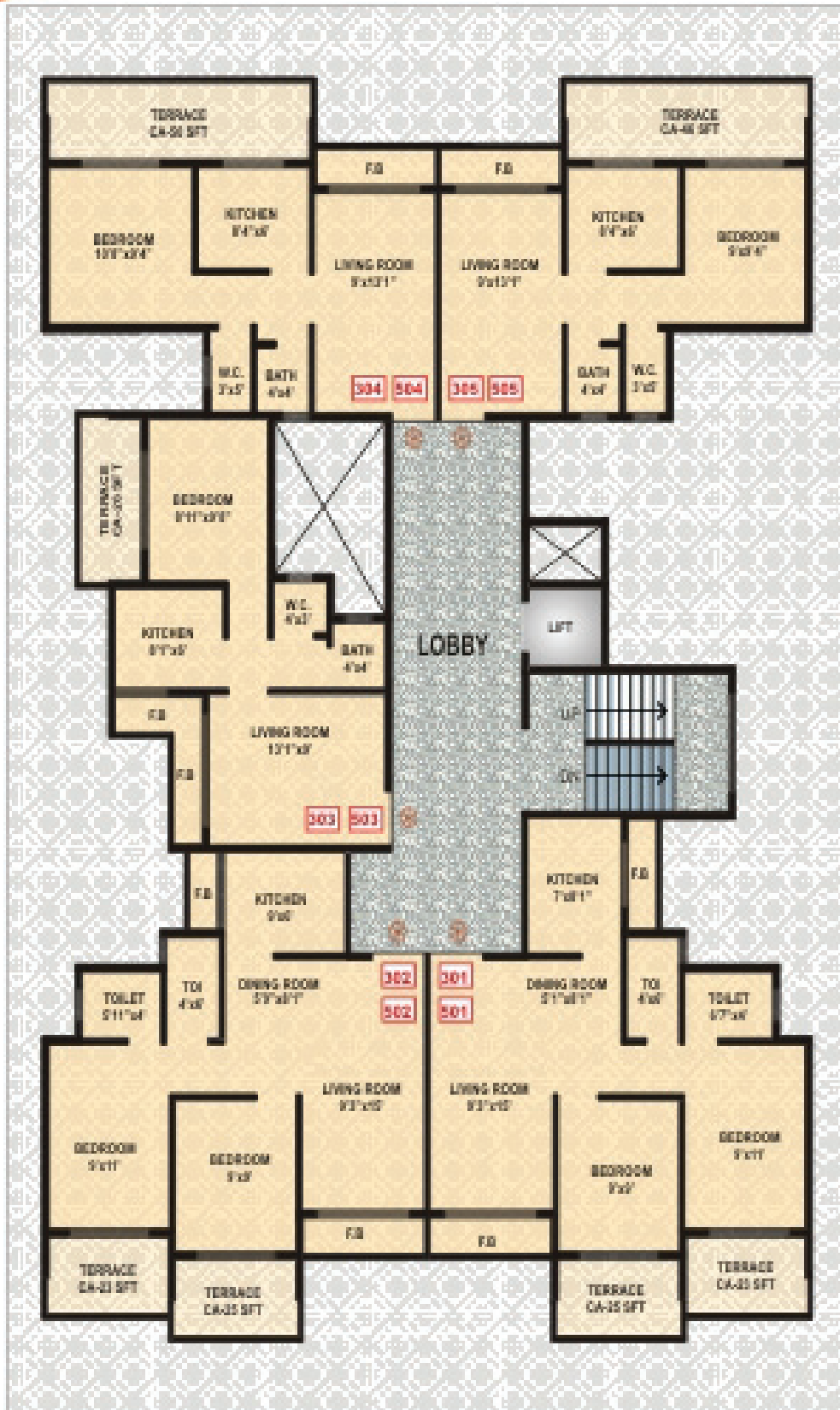


FIRST FLOOR PLAN

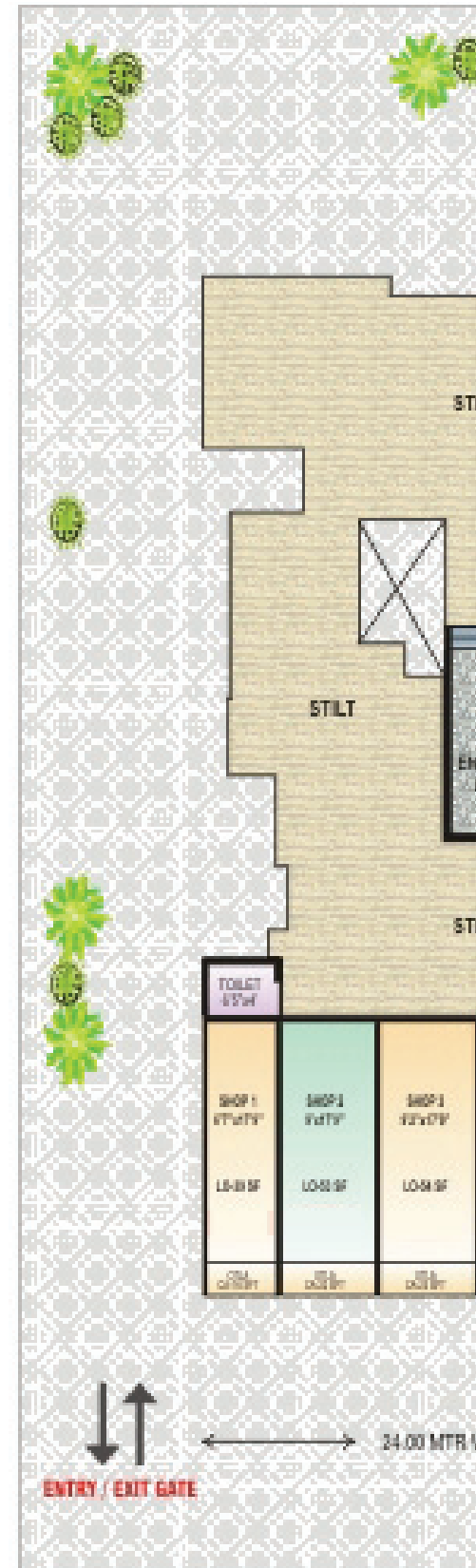


SEVENTH FLOOR PLAN

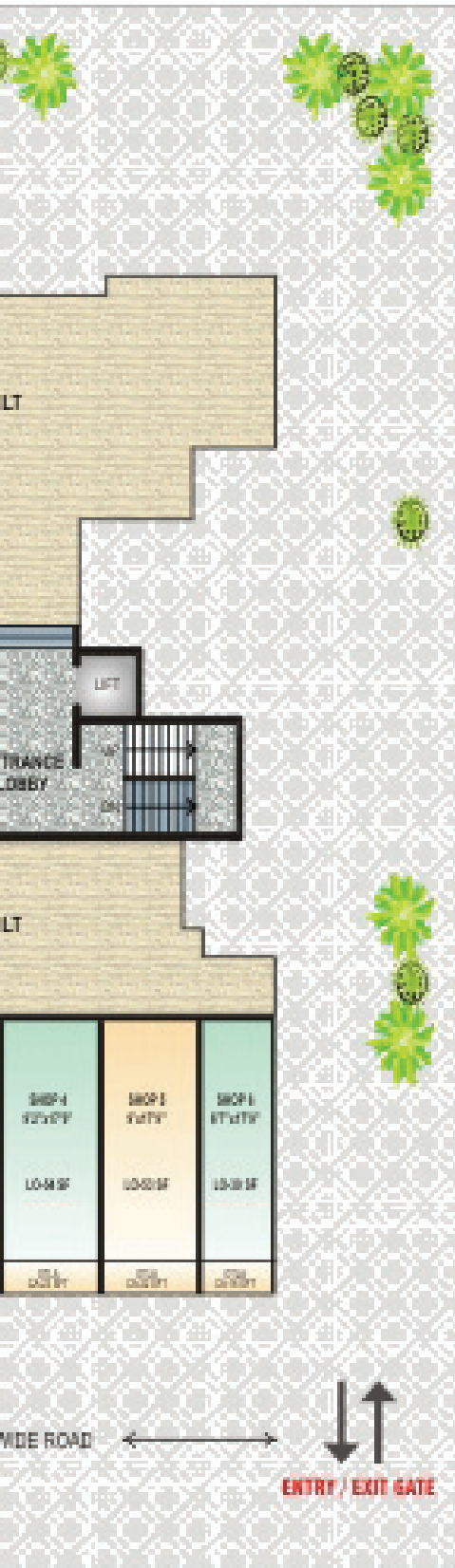




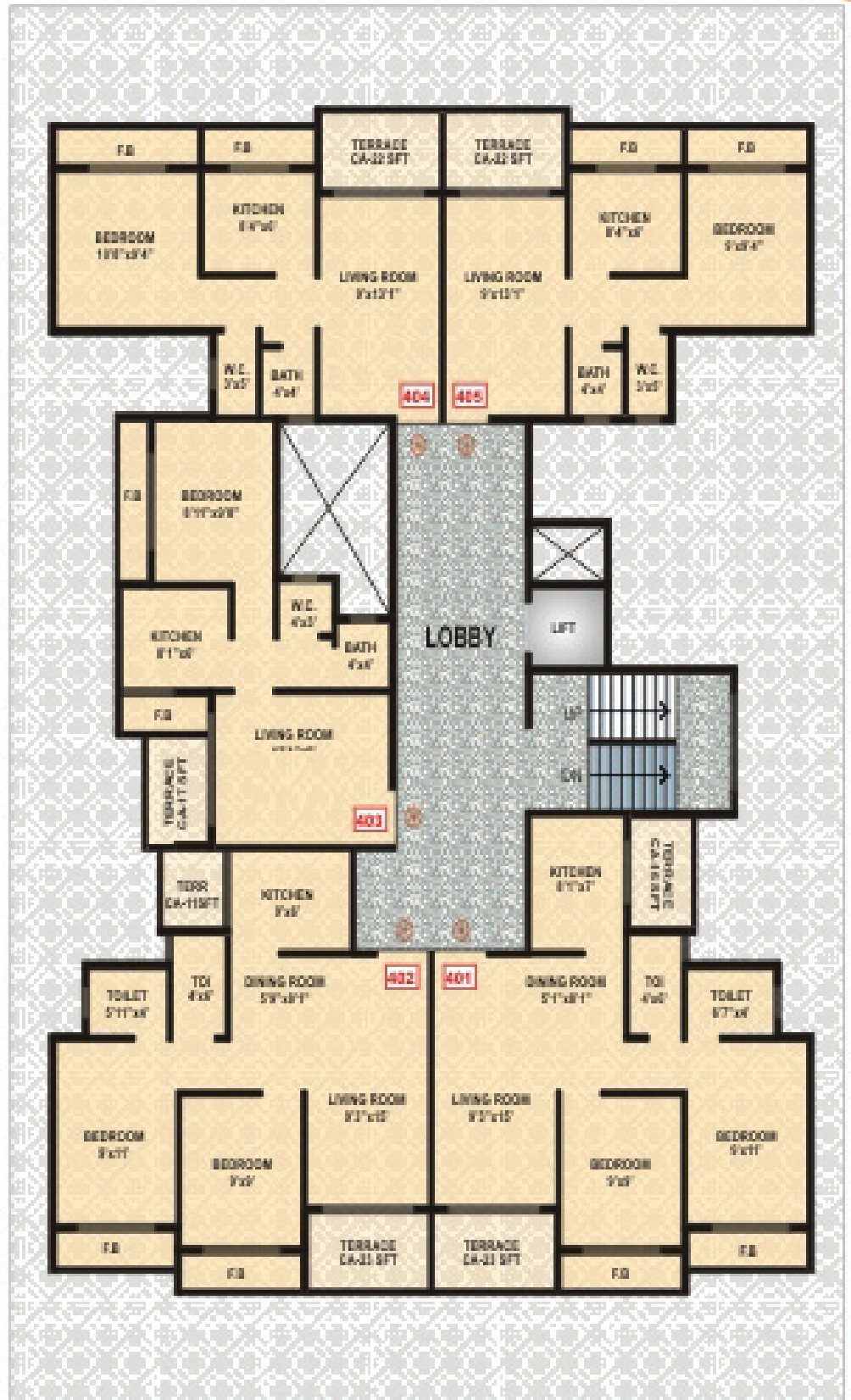
THIRD & FIFTH FLOOR PLAN



GROUND FLOOR PLAN



FLOOR PLAN

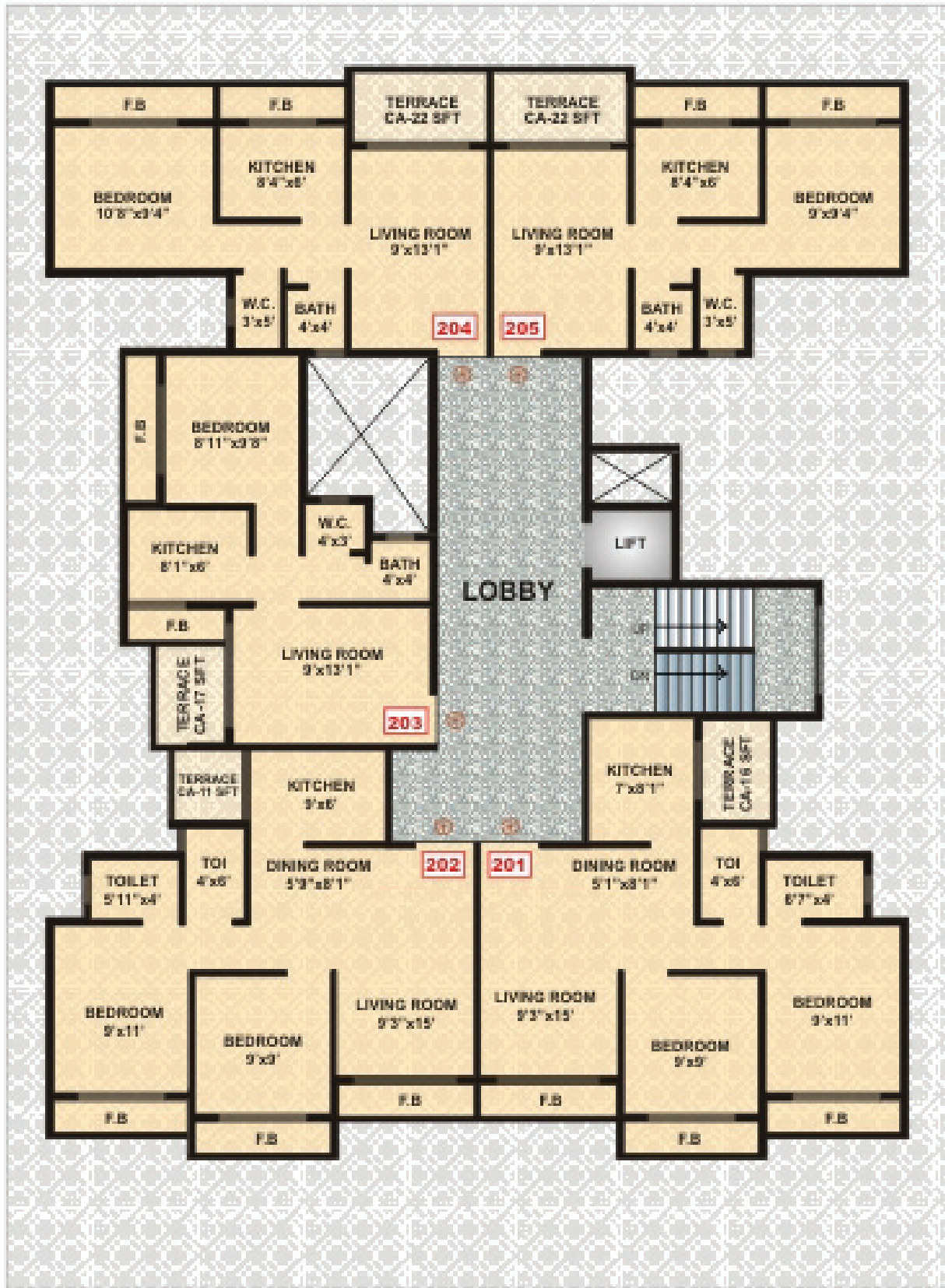


FOURTH FLOOR PLAN



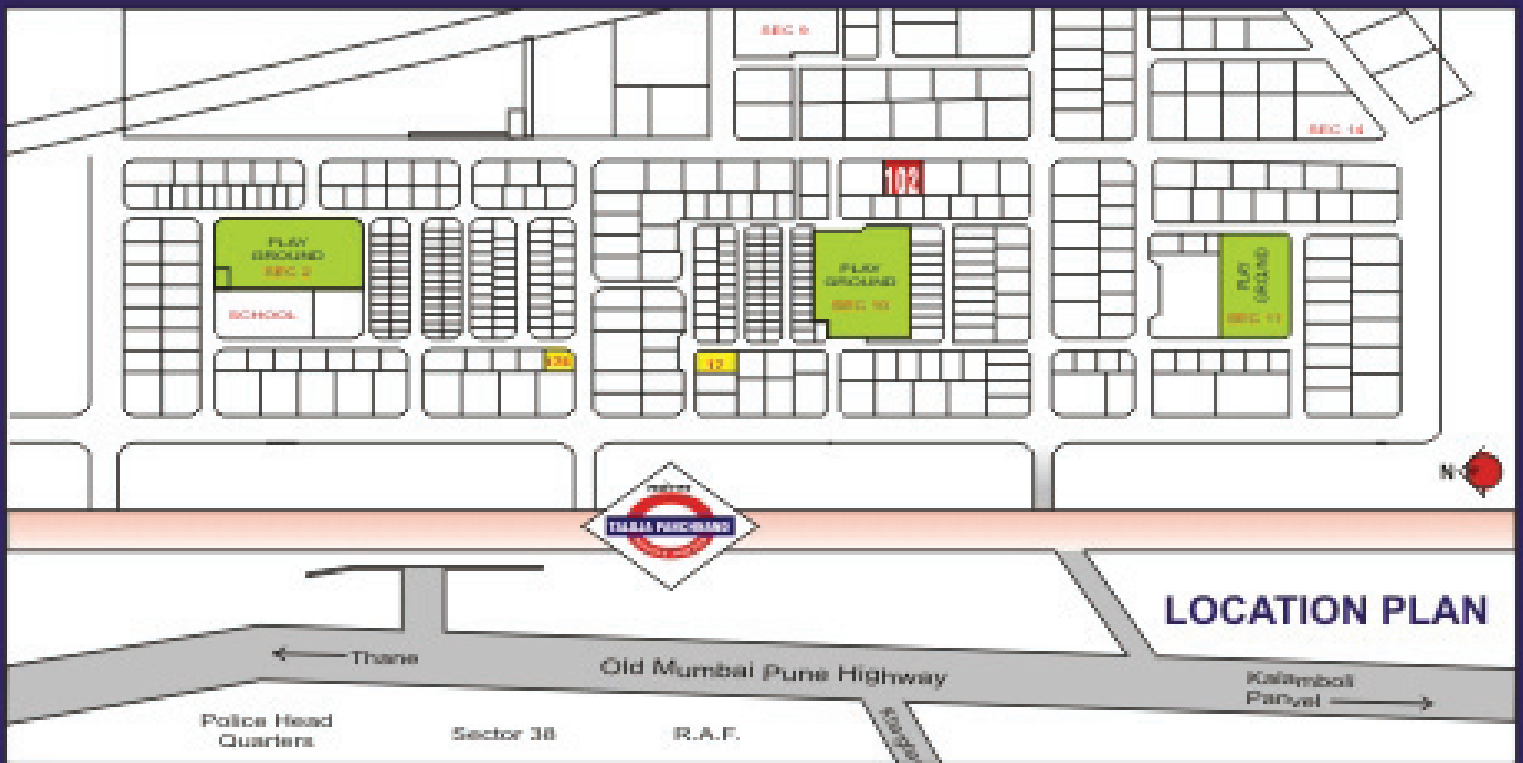


SIXTH FLOOR PLAN



SECOND FLOOR PLAN





LOCATION FEATURES

2 Minutes Walking Distance from Taloja Rly. Stn. • Proposed International Airport & Metro Train. • Fastest Developing Node of Navi Mumbai. • Simply connected to Highway of Panvel, Pune, Kharghar, Kalamboli & Central Line - Mumbra, Kalyan, Dombivli, Thane.

AMENITIES

- Porceleno flooring in living rooms. Kitchen and bedroom.
- Green marble kitchen platform with stainless steel sink.
- 4 Feet height glazed tiles above kitchen platform.
- Full height glazed tiles in toilets and bathroom upto beam level.
- Lambi finish walls with OBD paint.
- All external surface painted with good quality acrylic paint.
- Provision for washing machine.
- FRP door for bathroom & toilets with marble frame.
- Finest quality chequer tiles on stilt parking.
- Concealed copper wiring with modular switches.
- Cable / T.V. points in living and master bedroom.
- AC point in bedrooms.
- Concealed plumbing with premium fittings.
- Powder coated aluminium sliding windows.
- Tinted glass in all windows.
- Reputed brand make lift.
- Ceramic flooring on attached terraces.
- Attractive Elevation & Attractive main entrance gate.
- Greeny compound wall plantation.
- Security cabin of 24 hours security.

Project by

A. S. Developers

Developed by

Dolphin Enterprises & A. M. Associates

For Booking : 9322228917 / 9819676488

REDG OFF: H-102, 1st Floor, Nerul Railway Station Complex, Nerul (W), Navi Mumbai. Tel: 022 - 2299 0924

Telefax: 2758 1788 E-mail: info@dolphinenter.com, dolphint_d@yahoo.com

BRANCH OFF: Elite Group, Office No. 323, Skylark Bldg., Next to Agarwal Trade Centre, Plot No. 63, Sector 11, CBD Belapur, Navi Mumbai - 400614.

ARCHITECT
Sheetal P. Nemane

www.dolphinenter.com